

# E-Fun 400 "Born to Kill"

CNC@NET

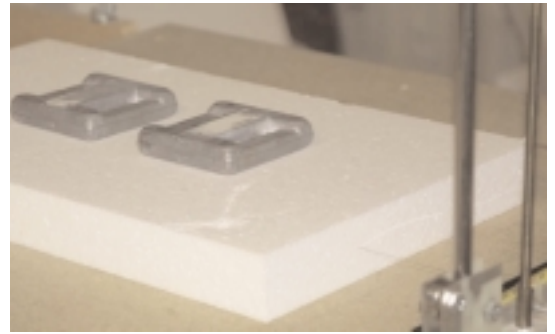
Découpe - Cutting sequence

CNC@NET

## Les ailes - Wings

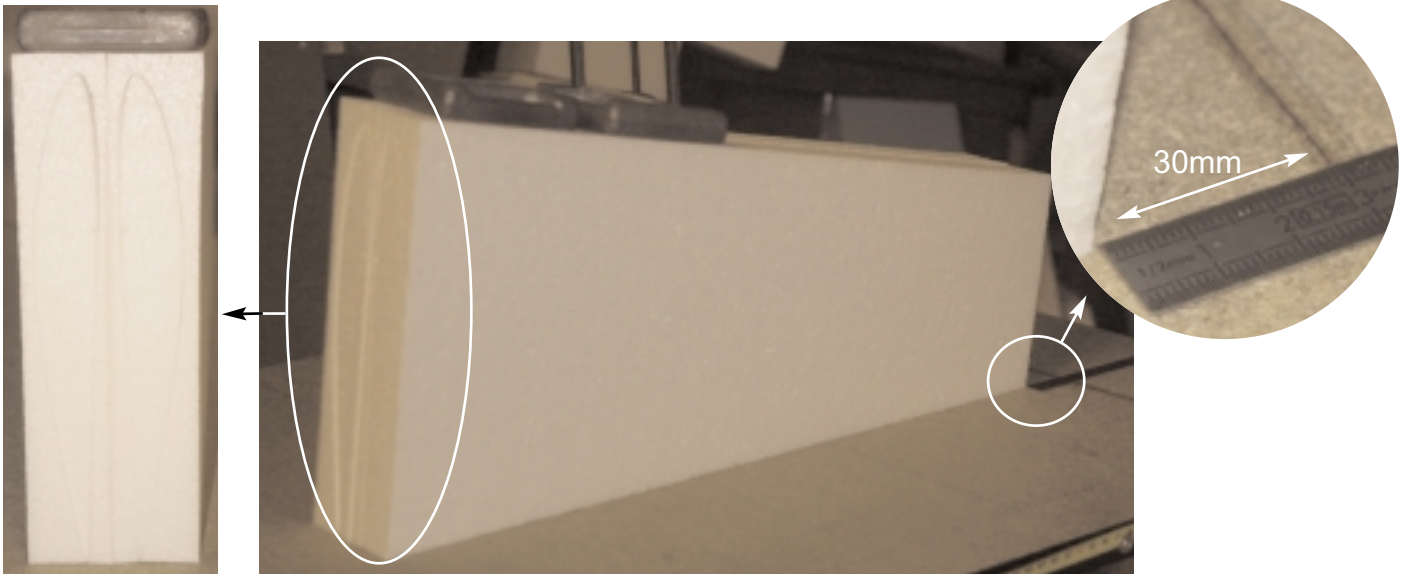
Chaque aile est découpée dans un bloc de 460mm x 255mm x 40mm.  
Utilisez le fichier **EF400-BtK\_01.cnc**

*Each wing is cut in 460 mm x 255mm 40mm foam block.  
Use **EF400-BtK\_01.cnc** file to cut this part.*

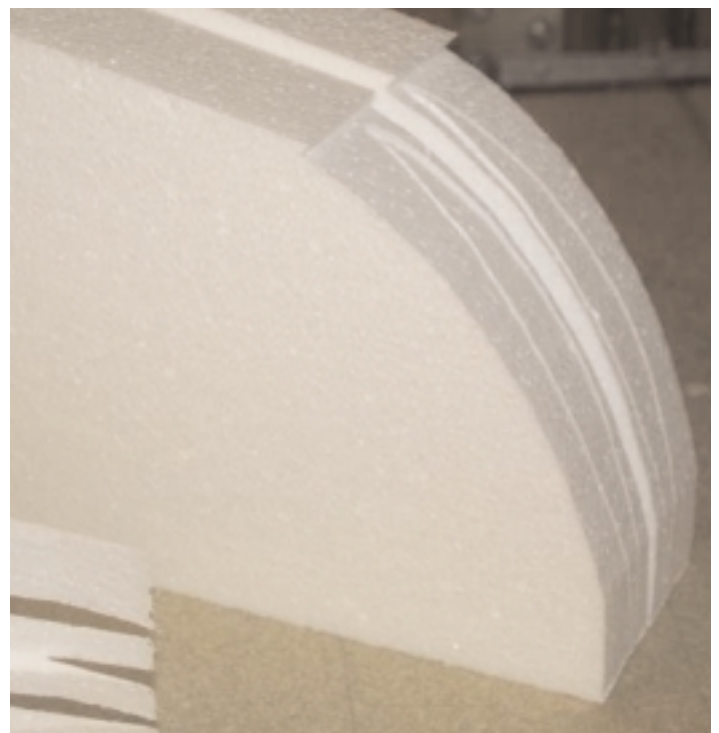


## Les saumons - Wings tips

Utilisez le fichier **EF400-BtK\_02.cnc**. Use **EF400-BtK\_02.cnc** file to cut this part.



! Offset  $X_0 = 20\text{mm}$  bloc à 30mm  
! Offset  $X_0 = 20\text{mm}$  foam block at 30mm

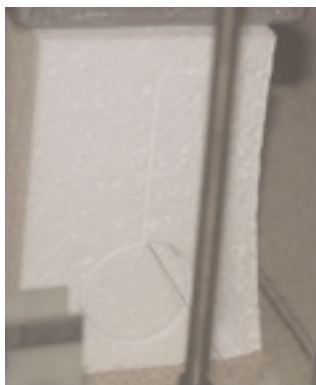


## Bloc moteur - Engine mount

### Logement - Housing

Dans un bloc de polystyrène de 90mm x 65mm x 100mm. Utilisez le fichier **EF400-BtK\_03.cnc**

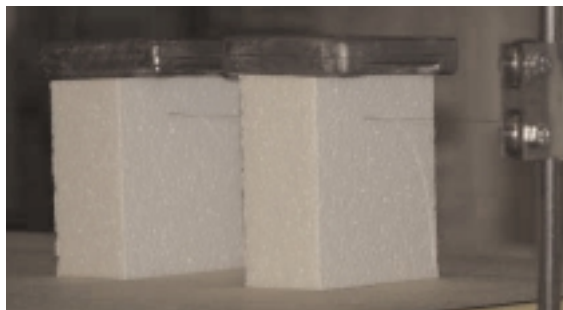
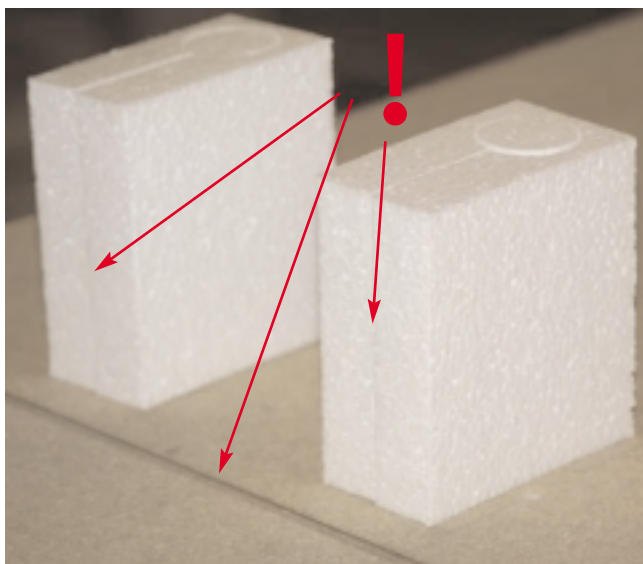
The engine housing is cut from 90mm x 65mm x 100mm foam block. Use **EF400-BtK\_03.cnc** file to cut this part.



### Profil - Engine mount profile

A partir du logement moteur. Utilisez le fichier **EF400-BtK\_04.cnc**

From the engine housing part. Use **EF400-BtK\_04.cnc** file to cut the profile.



### Fuselage profil - Fuselage profile

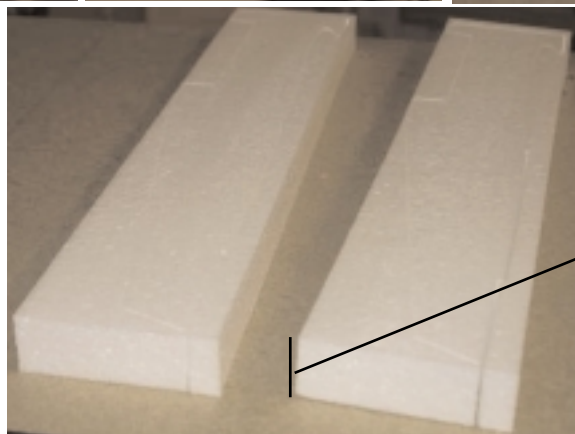
Dans un bloc de polystyrène de 62mm\* x 510mm x 100mm. Utilisez le fichier **EF400-BtK\_05.cnc**

From 62mm\* x 510mm x 100mm foam block. Use **EF400-BtK\_05.cnc** file to cut this part.



Obtention des deux flancs du fuselage par guillotinage horizontal.

Obtaining a two dimensional fuselage through a horizontal cut.



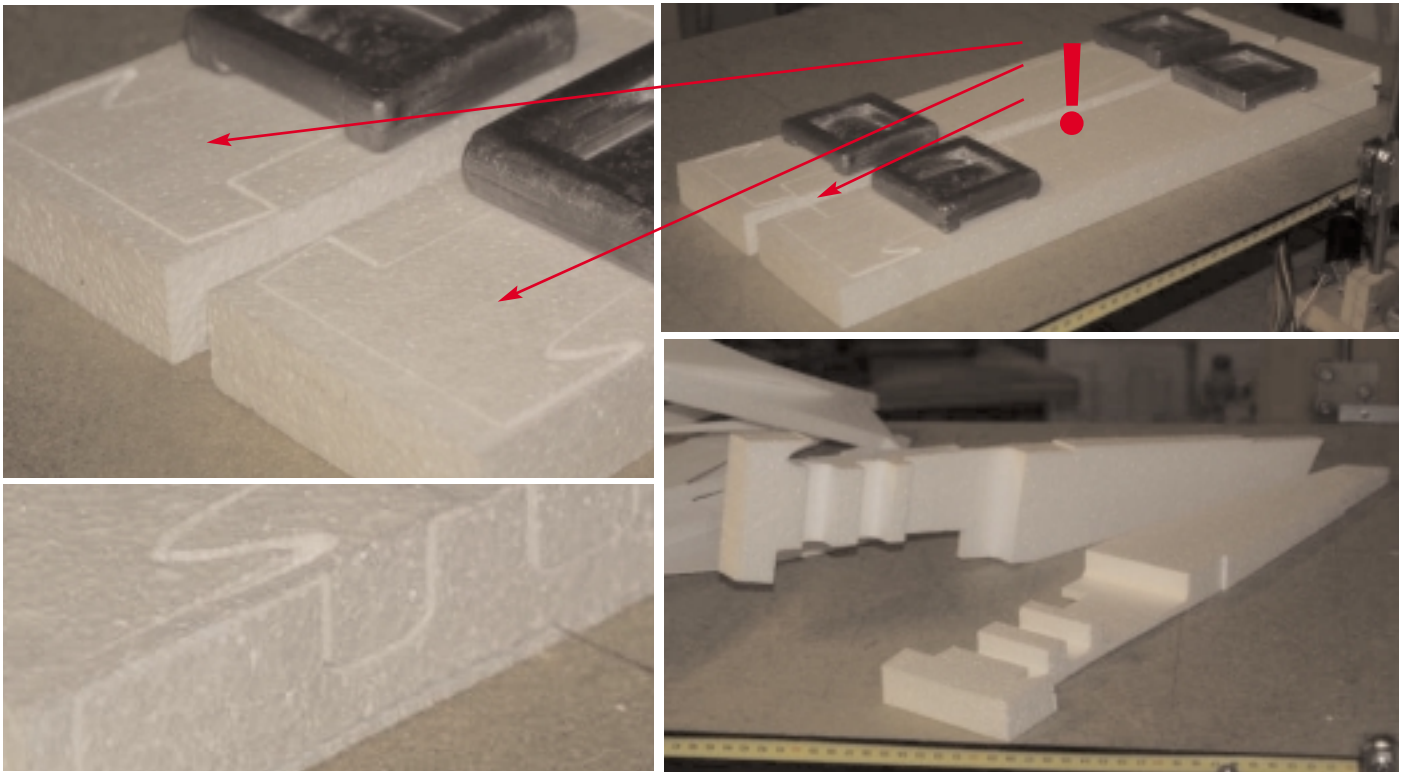
30mm

(\*) : 62mm pour un fuselage  
(\*) : 62mm for one fuse

## Fuselage flancs - Fuse flanks

A partir des deux découpes précédentes .Utilisez le fichier **EF400-BtK\_06.cnc**

*From the two previous cut. Use **EF400-BtK\_06.cnc** file to cut the profile.*



## Dérive - Fin

Dans une plaque 190mm x 130mm de Depron de 3mm. Utilisez le fichier **EF400-BtK\_07.cnc**

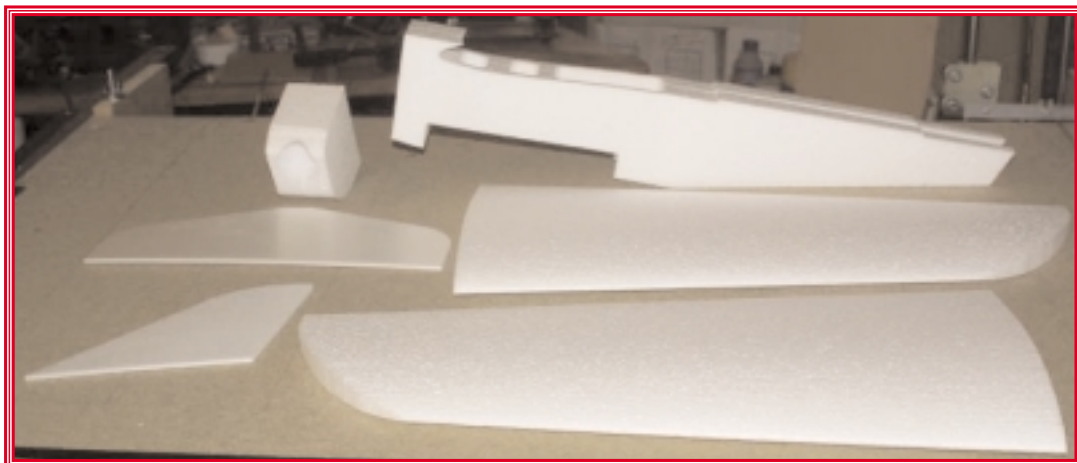
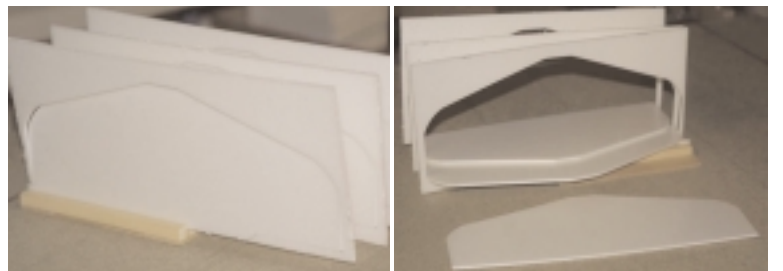
*In a 190mm x 130mm plate of Depron 3mm thickness. Use **EF400-BtK\_07.cnc** file to cut the fin.*



## Stabilisateur - Tailplane

Dans une plaque 280mm x 130mm de Depron de 3mm. Utilisez le fichier **EF400-BtK\_08.cnc**

*In a 190mm x 130mm plate of Depron 3mm thickness. Use **EF400-BtK\_08.cnc** file to cut the tailplane.*



CNC@NET

Coligny Marloth, Daren Anguelkov